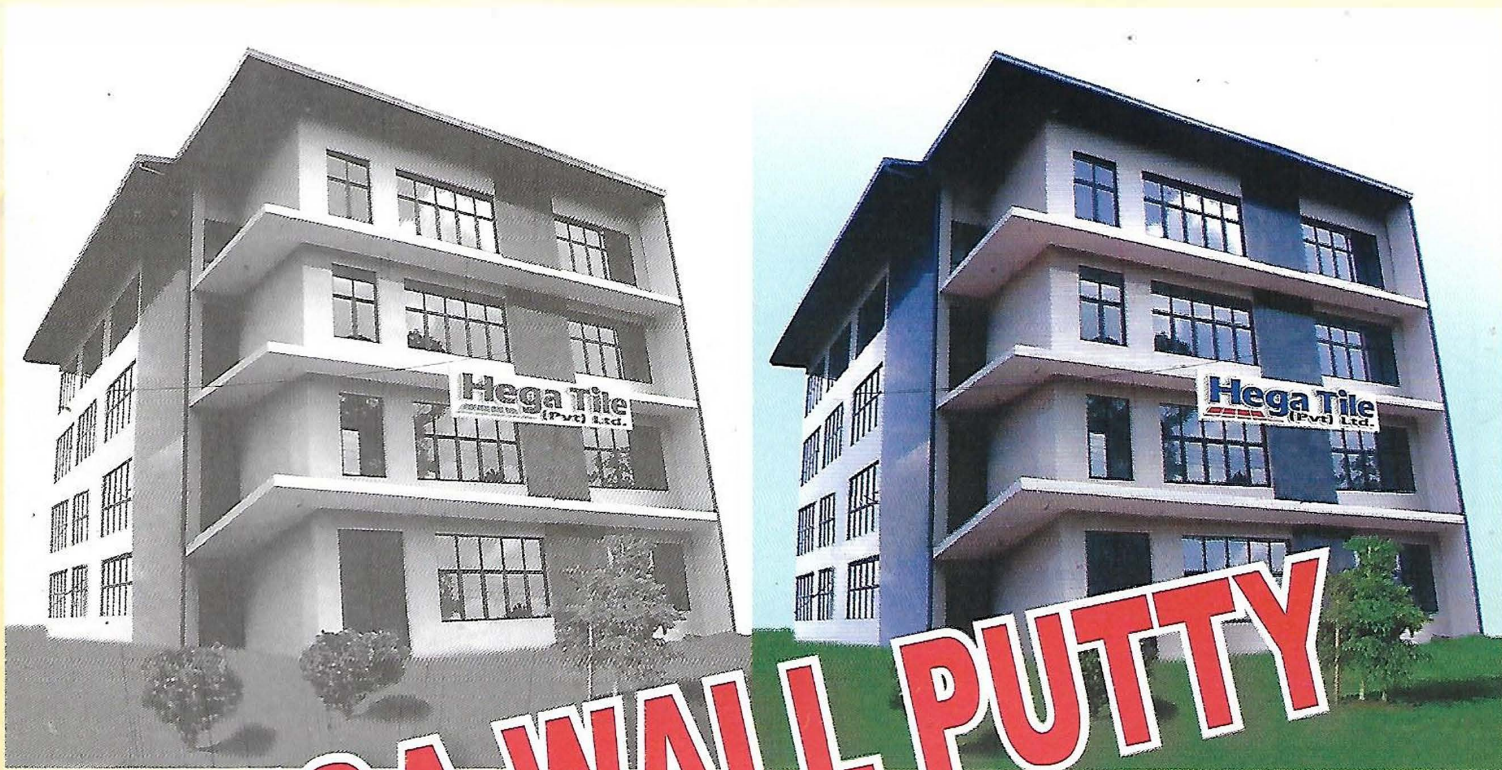


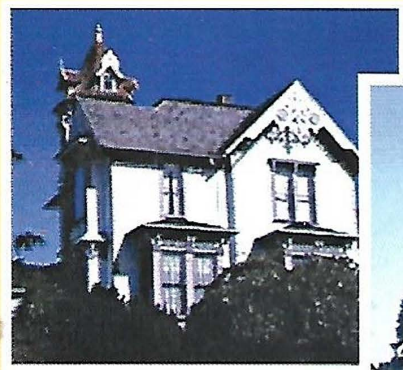
For Silky Interior / Exterior Finish



HEGA WALL PUTTY

SKIM COTE

All purpose plasterboard system for bedding, taping and finishing



HORANA MINERALS (PVT) LTD.



146/84, Salimal Place, Mottagoda, Sri Lanka.
Tel: 0094 11 278220, Direct: 0722 386404
Hotline: 0722 344851 | Fax: 0094 11 2782212
E-mail: hega@hinet.lk

INTRODUCTION

- * Hega Wall Putty is a high quality interieal based fine powder which provides an ideal finishing for concrete / cement plastered walls and ceiling.
- * It Provides an ideal base for painting.
- * It provides damp resistant smooth finish for further application of all kinds of paints. (Damp resistance means resistance to water in humid air & not physical water contacts / leakages).
- * It gives pleasing look to interiors & exteriors.
- * It is fine powder to be mixed with water as advised for direct for direct application on plastered surface of the interiors / exteriors to get silky and shiny finish.
- * Can be used on concrete, rendered wall, hollow block, precast walls, concrete ceilings, calcium silicate bricks & aerated light weight blocks.
- * Not recommended for use on painted or other non-cementitious surfaces.



SURFACE PREPARATION

New Surface

New surface requires preparation such as removal of dust, dirt and foreign matter. In case of cracks, voids & damages it should be repaired. Surface should be in just-wet condition, prior to putty application.

Old Unpainted Surface

All loose material, organic growth, dirt, etc, must be removed with steel blade or wire brush. Surface should be in just-wet condition, prior to putty application.

Old Painted Surface

Scrub the surface with coarse wire brush / sand paper and clean thoroughly so that it is free from old paint / dust particles till the cementitious / plastered surface is seen. Surface could be washed with water, however ensuring that surface should be in just-wet condition, prior to putty application.

Very Smooth Surface

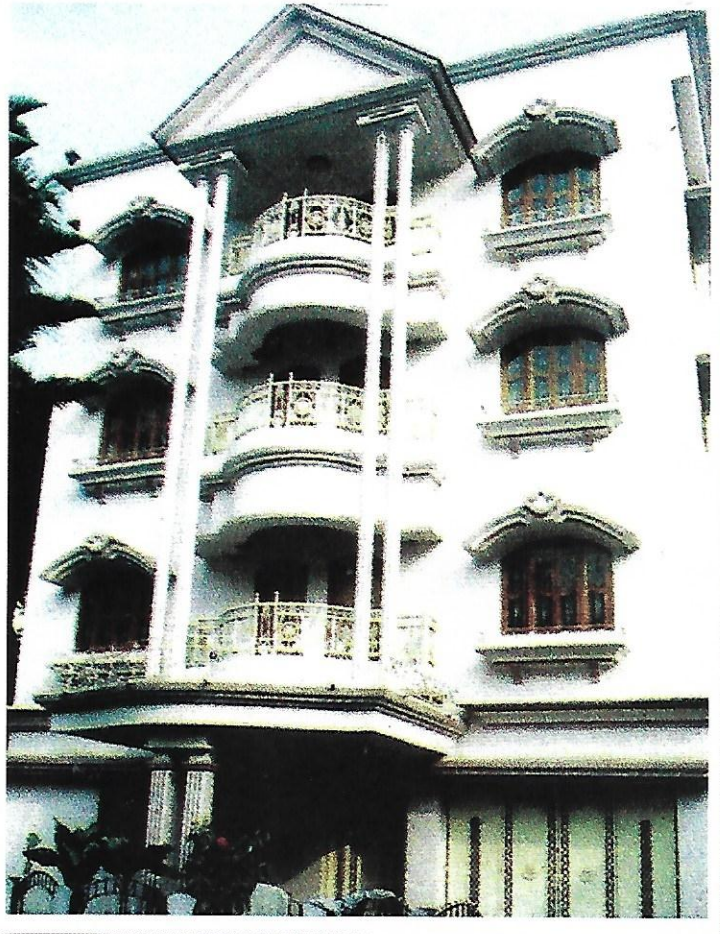
If the surface was made by cement ghutai (smoothing) which normally is very smooth, bonding with putty may not become sufficiently strong. Scraping the surface with emery stone/paper is recommended before putty application. Surface should be in just-wet condition, prior to putty application.

Area near the skirting

Extra care is recommended for the area adjacent to skirting of the floor (at least area up to one feet above the skirting). During grinding of the skirting and floor, slurry is generated. It sticks to the wall and if not cleaned properly, wall putty on it will not give good results. Chances of flaking/poor adhesion. Area at least up to one feet above the skirting should be cleaned with wire brush and washed thoroughly so that slurry deposited on the wall during grinding is totally removed. After drying the wall, putty can be applied as normal.

Plaster showing sign of Efflorescence / salt deposition

If due to salty water or salts in sand/bricks, problem of efflorescence is observed then plastered surface should be treated with mild acid like citric acid before application of Hega Wall Putty. Other wise, wall putty will not stick to the wall and problem of flaking may arise. After 30 minutes treating the surface with mild acid, surface should be washed thoroughly so that no acid remains on the wall. After drying properly, wall putty can be applied as normal. This treatment should be done under proper supervision



PREPARATION OF HEGA WALL PUTTY PASTE

- * Mix Hega Wall Putty slowly in @ 35 - 40% water by volume to prepare paste of desired consistency.
- * Mix vigorously for 5-10 minutes for making lump free and uniform paste, as shown.
- * Product should be mixed in such quantities that it could be used within 2 hrs of its preparation.
- * Mixing could be done manually or by suitable



COVERAGE

We recommend :

- * Maximum two coats (Layers) of Hega Wall Putty.
- * Maximum thickness of 1st coat (Layer) 1.5 mm.
- * Maximum thickness of 2nd coat (Layer) 1.0 mm.
- * Approx achievable coverage is 35 sqft./mm thickness /kg of Hega Wall Putty.
- * For recommended thickness above, the coverage achievable is @ 14 sq.ft/kg of

APPLICATION

- * Ensure that surface is plastered OR made with cementitious material.
- * Ensure that surface is totally clean.
- * Ensure that surface is moderately rough. (Neither too-rough nor too-smooth).
- * Ensure that surface is just-wet. Over-wetting resulting in accumulation of water on surface should be avoided.
- * Apply first coat
- * Use spatula / blade / trowel on the wall with "bottom to top" Configuration.
- * Apply second coat preferably after @ 4 hrs hot in hot Season & after @ 12 hrs application marks of 1st coat, if any.
- * Re-mix putty paste again for @ 1 minute, if it is left undisturbed for @ 30 minutes.
- * Allow complete drying @ 2 days and then use fine emery paper to remove application mark, if any

OR

- * Half an hour application of 2nd coat smoothing could be done with trowel.
- * Paint could be done after 3 or more days of putty of work but it shall be ensured that putty is completely dry before applying paint.
- * Clean application tools with clean



PRECAUTION

Although Hega Wall Putty do not contain any toxic, use rubber gloves while mixing.

Precaution should be taken to avoid dust inhalation while handling putty powder or during removal of application marks with fine emery paper say wearing nose mask.

Keep the product out reach of children.

Once putty paste has hardened, it shall not be used by adding water.

SALIENT FEATURES OF HEGA WALL PUTTY

We do not recommend mixing of pigments / stainer in Hega Wall Putty.

Quality of painted surface is directly proportional to quality of un-painted surface.

Hega Wall Putty renders ideal Condition as un-painted surface for paint applicatuion.

Paint can be applied on Hega Wall Putty with or without primer. However, use of primer shall give cost advantage in case of expensive paints.

Lustrous white and smooth surface which can be left unpainted.

Life of Hega Wall Putty is as long as the life of grey cement plaster underneath.

It prevents growth of algae and fungus on walls.

Any kind of distemper can be applied on it directly.

Textured finish can be obtained by use of texturing tools.

As prevalent in case of other non-cement putties, primer application is not recommended before Hega Wall Putty application. This saves cost.

WETTINGS

Usual curing with lot of water is not needed. keeping in view the ambient temperature, need based wetting is recommended.

Just-wet the surface, prior to putty application.
After applying first coat wet the surface gently.
After application of second coat, wet surface twice a day for at least one day, if season demands it.
Water shall be applied gently.

STORAGE

Store Hega Wall Putty in a dry place.
Open the bag just before use.

Properties	Hega Wall Putty	Traditional putty
Area of Application	Can be applied on exterior/exposed surface / interior / ceiling	can't be applied on exterior/ exposed surface
Binding Property	Cement based putty, hence good binding property	Very low binding property due to use of chalk powder.
Coverage Area	14 sq.ft/ kg. on new smooth plastered wall for finished thickness.	@ 10 sq.ft/ kg. for equivalent thickness.
Consistency	Consistence in quality as it is Factory made with standard ingredients & continuous quality control.	Large variation in properties. Quality of ingredients varying from area to area.
Cosumption of Distemper	Less Distemper is required because of its low absorption.	Requires more Distemper because of its high absorption.
Cost	Less ultimate cost due to long life span, No Primer cost, low paint absorption.	Ultimate cost is high.
Durability	More durable due to good binding property.	Less durable
Look	Better appearance due to very high whiteness (Min.93%) of putty.	Appearance is not like HEGA putty due to its yellowish base.
Primer cost on base surface	No requirement of Primer Cost.	Primer cost application is a must.
Strenght	High like cement	Low strenght
Water Resistance	good resistance to dampness.	It doesn't resist dampness



REMARK

Structural problems could not be taken care of by the finishing / decoration material.
Therefore, adequate quality assurance of structure is strongly recommended.
We are available for technical experience sharing at any stage of the project.

please contact : e-mail: hega@sltnet.lk

HEGA WALL PUTTY



Hega

HORANA MINERALS (PVT) LTD.



146/84, Salimal Place, Mottagoda, Sri Lanka.
Tel: 0094 11 278220, Direct: 0022 386404
Hotline: 0022 344801 | Fax: 0094 11 2782212
E-mail: hega@sltnet.lk